

CREATE CTRL



License

Contract & license
management

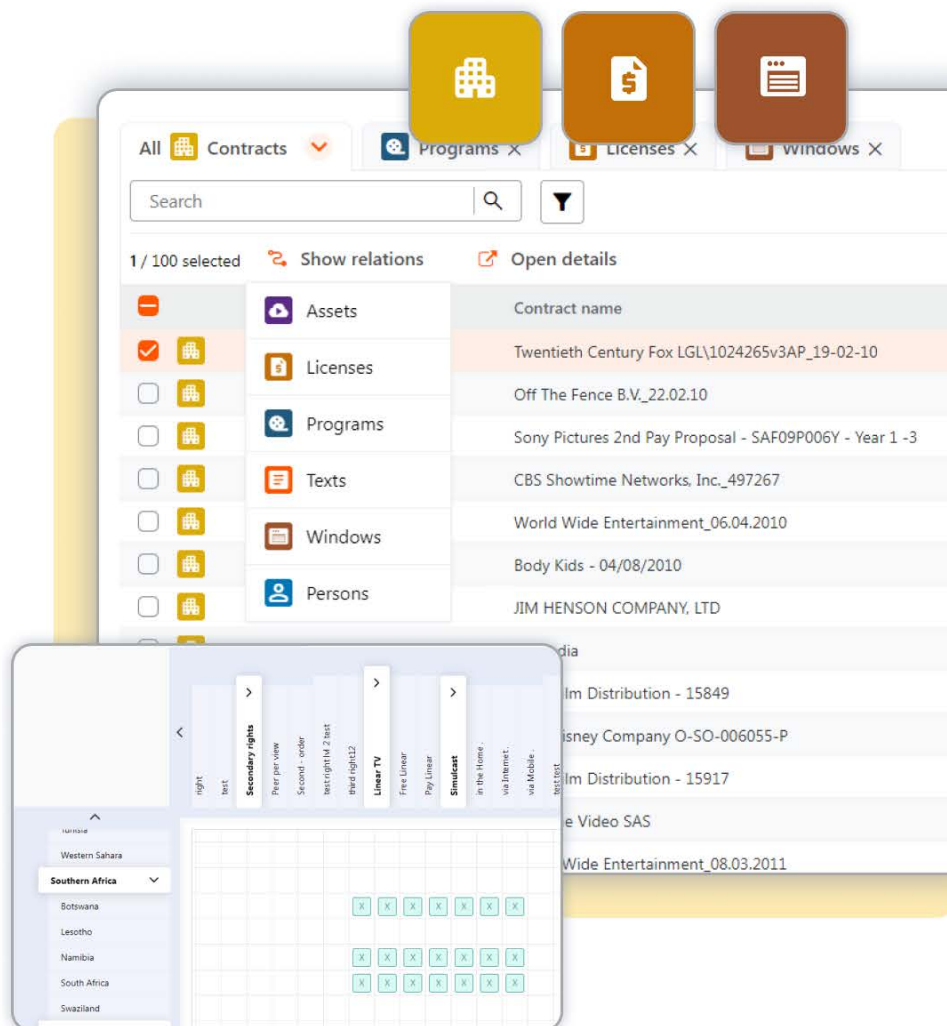
About License

Maintain and manage all your contracts with just one app and keep track of all your licenses. The detailed contract and license management gives you exactly the control you need for your linear as well as non-linear licensing. Manage the rights of each license with the help of our innovative rights matrix.

Interfaces

Our Apps are compatible with multiple interfaces, like:

- EPG
- Ad Sales
- MAM



License

Key features



Complete **Contract Capture**

Efficiently capture all essential contracts for your broadcast data. Easily create and manage licenses for your content, with simple input of key contract details such as designation, type, date, status, and more.



Clear **Content Relationships**

Gain a clear understanding of how your contracts, licenses, windows and broadcast content are interconnected with our intuitive overview. This clarity fosters enhanced collaboration across teams and departments.



License **compliance**

Easily access and manage contract data with secure, on-demand viewing of key details like license rights. Make adjustments with just a few clicks, ensuring your content remains compliant and up-to-date.



VOD **Availability Management**

Beyond linear planning, seamlessly manage VOD channels with effortless scheduling and planning of individual content availabilities.

A screenshot of a software interface showing a table of contracts. The interface includes a navigation bar with tabs like 'CREATE', 'CTRL', 'License', 'Dashboard', 'Rights', 'Contracts', 'Relations', 'Analysis', 'Accounting', and 'Connect'. There is a search bar and a table with columns for contract details.

Contract name	Contract type	Contract date	Contract begin	Contract end	Contract category	Contracting party
Twentieth Century Fox LGL1024265v3AP_19-02-10	Aquisition Contract	19.02.2010	01.05.2010	31.12.2013	International	
Off The Fence B.V._22.02.10	Aquisition Contract	22.02.2010	01.04.2010	31.03.2012	International	
Sorry Pictures 2nd Pay Proposal - SAF09P005Y - Year 1 -3	Commissioned	03.03.2010	01.05.2010	31.03.2014	International	
CBS Showtime Networks, Inc_497267	Aquisition Contract	26.03.2010	01.05.2010	31.10.2011	International	
World Wide Entertainment_06.04.2010	Aquisition Contract	06.04.2010	01.05.2010	30.04.2012	International	
Body Kids - 04/08/2010	Aquisition Contract	04.08.2010	17.08.2010	17.08.2012	International	LR: BODY KIDS, LE: JC Media, LE: On

Fast Integration


Getting started with our web applications is **incredibly simple**. There's no need to install any additional software - just use your existing web browser. All you need is a stable internet connection, an up-to-date browser, and secure login credentials to access and **start using your web app instantly**. We take care of all the technical details, allowing you to concentrate on what truly matters - **growing your business**.

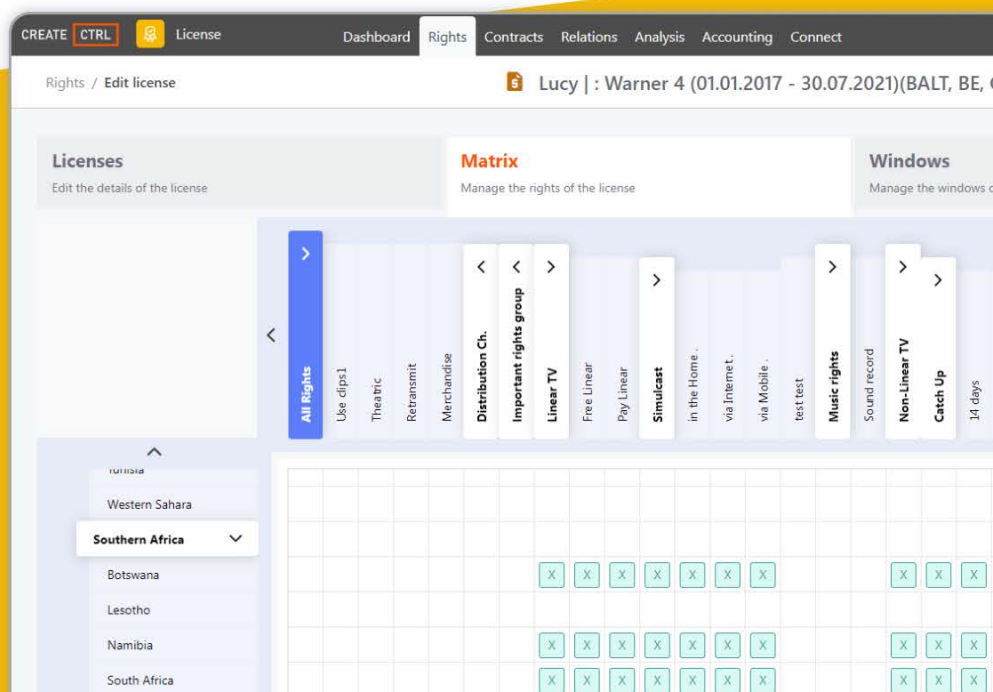
Dedicated assistance

From the initial concept to the seamless deployment of our CreateCtrl Web Apps, our team provides **comprehensive support, including training for employees, individual consulting, and ongoing maintenance**. We ensure effortless integration of our web applications to your workflows, offering continuous support to keep your apps running smoothly.

Cloud

Experience the power of AWS cloud hosting for your web-based applications. Our solutions **leverage AWS's robust, scalable infrastructure, ensuring high performance and reliability**. Benefit from on-demand resource allocation, enhanced security, and seamless updates, all while reducing operational costs. Enjoy the flexibility and efficiency of cloud hosting, with the confidence that your applications are supported by the leading cloud provider.

powered by 



Content workflow

Create your content and build a program schedule, ensuring compliance with license requirements. **Plan and schedule with integrated ad scheduling** to specify when and how long ads should run. Finally, **export your content seamlessly** to the playout system for effortless delivery and execution.



CreateCtrl Web Apps

- Seamlessly **plan and manage** individual programs for TV, streaming, radio, and social media platforms.
- Boost efficiency with **integrated tools** that streamline collaborative work.
- Ensure compliant **data security** through secure AWS Cloud services.
- Streamline the management of **contracts and licenses** for all types of content.
- Leverage integrated tools to **automate and simplify** campaign planning.
- Easily access and integrate **program data** for improved organization.
- Benefit from **smooth interfaces** with external systems such as **playout and MAM**.



Content

Content & metadata



Asset

Materials & metadata



License

Contract & license management



Programmer

Program planning



Planner

Broadcast scheduling



VOD

Planning for streaming



Campaigns

Campaign planning



Forecast

Strategic program stock



Teamer

Event planning



Shield

Protection of minors



Sport

Sport contributions



Topics

Editorial topics



Select

Offers & supplier



RPS

Editorial planning

Our customers



axel springer



ch media

Da Vinci

Deutschlandradio

Discovery

DF1

FRAME BY FRAME

...fsf
FREIWILLIGE
SELEKTION FÜR
FRÜHSEHEN

HD +

intigral

Mainstream
Media AG

MMO
Munich Media Operations GmbH

MOTOVISION®

PLANET

sbc

SEVEN.ONE
ENTERTAINMENT
GROUP

SILVERLINE
MOVIE CHANNEL

SPI
SPORTS

SPIEGEL TV

SPORTTOTAL

STUDIO100
MEDIA

Sunrise
UPC

WORLD
SPORT
EVENTS

CREATE

CTRL

Contact us

Empowering your success with our Solutions.

Get in touch with us!

CreateCtrl AG

Gleichmannstraße 1

81241 Munich

Tel. +49 89 5527770

sales@createctrl.com

CreateCtrl Polska

Królowej Bony 13

44-100 Gliwice, Poland

Tel. +48 32 726 19 42

office.polska@createctrl.com

Visit us on social media

